

NAC/BB/NM/NBBW



Please read this Operation Manual carefully before use, and file for future reference.

MADE IN JAPAN



This operation manual for:

NAC-EC / ER4 / ER10 / ER16 / ER64 / ECM / ER4M / ER10M / ER16M / ER64M
 BB-EC / ER4 / ER10 / ER16 / ER64 / ECM / ER4M / ER10M / ER16M / ER64M
 NM-EC / ER4 / ER10 / ER16 / ER64 / ECM / ER4M / ER10M / ER16M / ER64M
 NBBW-EC / ER4 / ER10 / ER16 / ER64 / ECM / ER4M / ER10M / ER16M / ER64M

Intended to Use

The handpiece is designed only for clinical dental use by qualified personnel.

Caution

- When operating the handpiece always consider the safety of the patient.
- Check for vibration, noise and overheating outside the patient's oral cavity before use. If any abnormalities are found, stop using the Product immediately and contact your authorized dealer.
- Do not allow any impact on to the Product. Do not drop the handpiece.
- Do not exceed the allowable max speed recommended on the Specification.
- Be sure to connect or disconnect the handpiece only after the motor completely stops rotation.
- Always confirm that the bur is correctly located in the position
- Do not use bent, deformed or damaged burs.
- Perform periodical maintenance checks.
- If the handpiece has not been used for a long period, check for noise, vibration, and overheating before use.

1. Specifications

| Model | NAC-Y | BB-Y | NM-Y | NBBW-Y |
|---------------------|--------------------------|--------------------------|--------------------------|--------------------------|
| Allowable Max.Speed | 30,000 min ⁻¹ | 40,000 min ⁻¹ | 30,000 min ⁻¹ | 40,000 min ⁻¹ |
| Bur Size | ISO 1797-1 Type1 | | | |

2. Mounting and Removing the Bur

(1) Mounting

- 1) Swing the Latch Plate to open the chuck.
- 2) Insert the Latch bur.
- 3) Swing the Latch Plate back to closed position.

Caution

If the directional insertion is right for the "D" shape hole, bur might install into the end of the chuck.

(2) Removing

Swing the Latch Plate to open position and pull the bur out.

3. Water and Chip Air Supply

■ NBBW

Connect the Irrigation Tube to the Irrigation Nozzle (Fig.1)

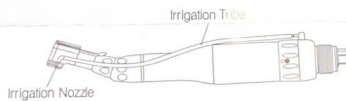


Fig.1

■ NAC / BB / NM

Connect the Spray Tube Attachment to the head and the tube to the Spray Tube Nozzle of the motor. (Fig.2)

*Spray Tube Attachment (Option): NAC, BB Order No. C032 701
 NM Order No. C039 701



Fig.2

4. Lubrication

(1) PANA SPRAY Plus / PANA SPRAY

Supply "PANA SPRAY Plus / PANA SPRAY" after each use and/or before autoclaving

- 1) Push E-type Spray Nozzle attachment over the lubricant spray nozzle until it firmly seats.
- 2) Shake the can 3-4 times to well mix lubricant and propellant.
- 3) Insert the E-Type Spray Nozzle in the rear of the handpiece and spray for approximately 2 ~ 3 seconds until the oil comes out of the handpiece head.

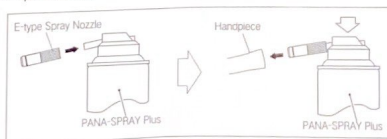


Fig.3